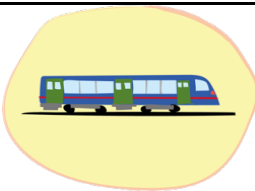




Getting to The Edinburgh Methodist Church, 25 Nicolson Square, EH8 9BX, Edinburgh

This is what
the venue
looks like



From Waverley train station



You can walk in 10 – 15 minutes

Leave the station and walk to North Bridge then it is one long road for half a mile: North Bridge onto South Bridge then onto Nicolson Street.



When you see KFC, then Nicolson Square is on the other side of the road.



To get the bus - Walk to North Bridge and catch any of these buses:
X62 / X95 / 8 / 14 / 49 / 51

You get off the bus just along from Surgeon's Hall. This should only be 2 stops from when you get on.

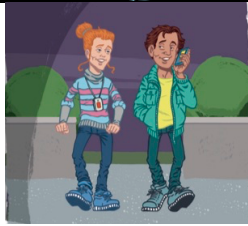


Nicolson Square is just across the road from the bus stop.

Please be careful crossing the road. There is a small island to stop in the middle of the road to check for traffic.



From Edinburgh Bus Station



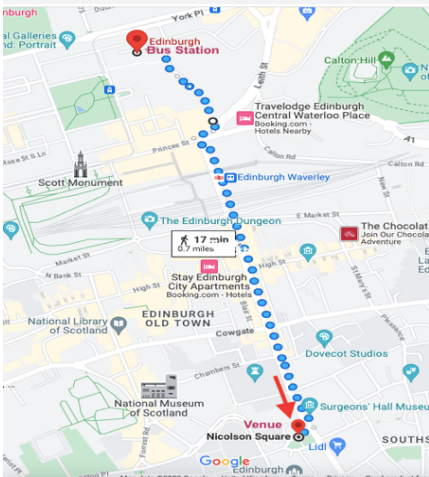
You can walk in around 20 minutes.

Leave the bus station and head towards Elder Street. Then continue to St James Square and onto James Craig Walk.

Turn right onto Leith Street. Then turn right onto Waterloo Place. Then turn left onto North Bridge. It is then one long road for half a mile.

When you see KFC then Nicolson Square is on the other side of the road.

You can also get the bus on Leith Road or North Bridge. Bus numbers are below.



There are lots of buses to the venue.

From the bus station you can get:

- X95 (towards Carlisle)
- X62 (towards Galashiels)
- 51 (towards St Boswells)

Or you can take a short walk to get a bus on Leith Road (bus numbers 7 / 8 / 14 / 45 / 49) or North Bridge (bus numbers X62 / X95 / 8 / 14 / 49 / 51).



You get off the bus just along from Surgeon's Hall. Nicolson Square is just across the road from the bus stop.

Please be careful crossing the road. There is a small island to stop in the middle of the road to check for traffic.



If you are travelling by bus from somewhere else in Edinburgh:

There is a bus stop directly outside the venue.

Bus numbers: 2 / 8 / 47

There are several bus stops on Nicolson Street.

Bus numbers: 2 / 3 / 5 / 8 / 7 / 14 / 29 / 30 / 31 / 33 / 37 / 47 / 49 / 51



Travelling by car

Parking:

Pay and display at Nicolson Square car park – located to the right of the building.

Other car parks are available close by:

NCP Edinburgh Holyrood Road

Park & Ride

Park your car then get a bus or train into the city.

There are 7 park & rides operating around Edinburgh. You can find the details here:

<https://www.edinburgh.gov.uk/parkandride>



Here is the location on a map

